

## **St James School Kotara – Traffic Management Plan**

### **Background**

This proposed traffic management plan has been prepared for the school drop off / pick up procedures for St James Primary school. This plan is to be provided in hard format to all parents / carers at the commencement of each term and included within the beginning of term newsletters and the school web page. The plan provides details for the drop off and pick up procedures for the school.

This plan shall be subject to ongoing monitoring and review.

### **Traffic Management Plan**

#### **DROP OFF**

- For student drop off within the school, vehicles will enter off Vista Parade and use the driveway to access the drop off zone located at the end of the driveway. There are 7 allocated drop off spaces and all students are to exit the vehicle only at this location.
- Once the students have been dropped off, vehicles must exit the school promptly by following the vehicle in front.
- The car park associated with the church opposite the school is available for drop off activities and must be vacated prior to 9.30 AM.
- A school crossing supervisor is provided to control the school crossing and shall hold students / parents as required to ensure improved flow of through traffic movements on Vista Parade. Parents / carers and students are to obey directions from this school crossing supervisor.

#### **PICK UP WITHIN THE SCHOOL**

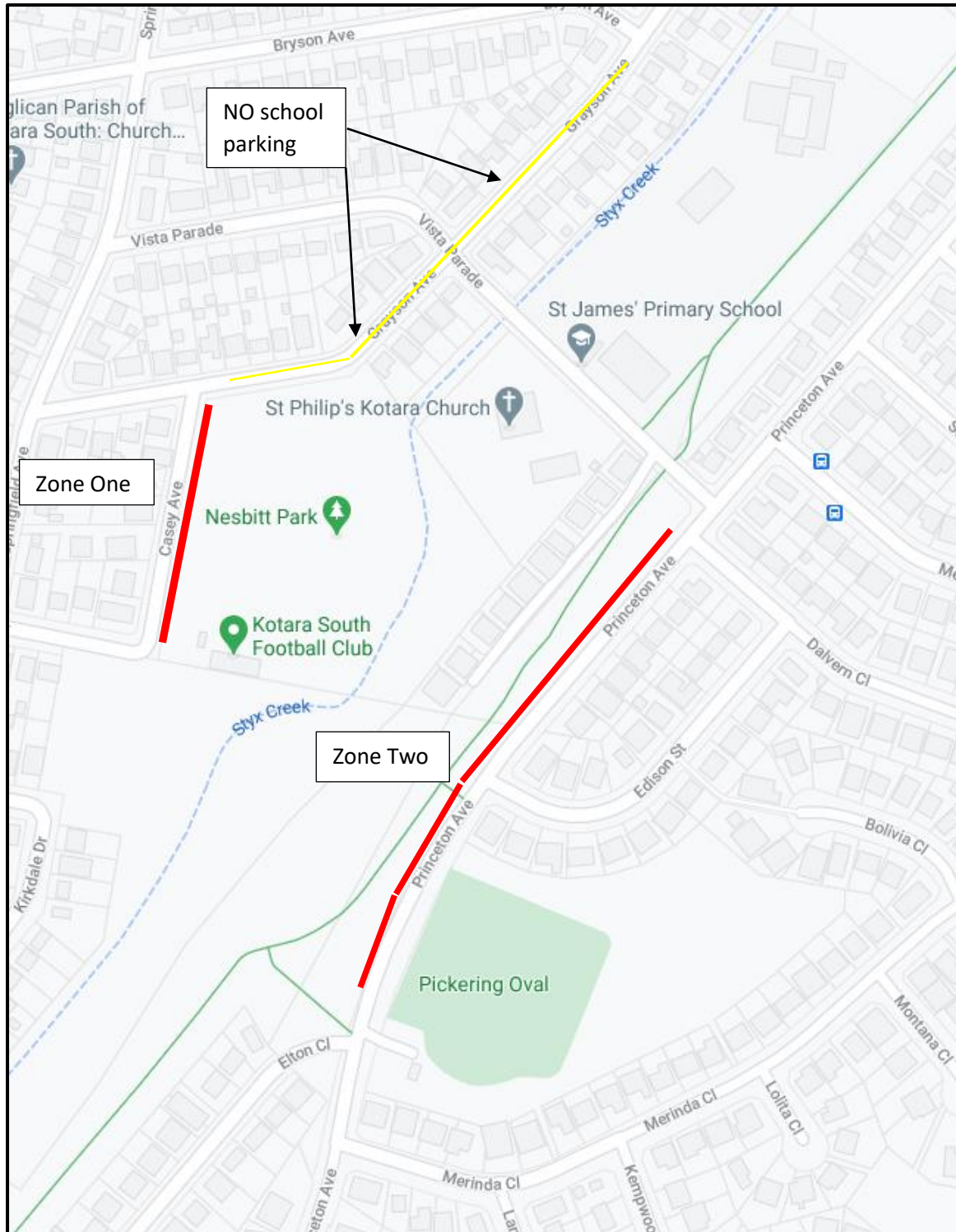
- Vehicles associated with the pick up within the school affix their family name to the passenger sun visor so that that the name is visible from outside of the vehicle.
- Any vehicle waiting in the driveway / pick up zone must park wholly within this area and not double park to block the driveway.
- Students being picked up in this location will be marshalled adjacent to the pick up zone by teachers and directed to their vehicle as the vehicle circulates and stop at the pick up zone.
- The teachers shall observe the name in the vehicle and direct the specific student to that car to ensure prompt pick up.

## **PICK UP EXTERNAL TO THE SCHOOL**

- The car park associated with the church opposite the school is available for pick up activities with no entry to occur prior to 2.30 PM.
- A school crossing supervisor is provided to control the school crossing and shall hold students / parents as required to ensure improved flow of through traffic movements on Vista Parade. Parents / carers and students are to obey directions from this school crossing supervisor
- Students being picked up from external zones shall be accompanied by teachers along the path and across Vista Parade via the school crossing. From here students shall walk to the 2 specified waiting areas.
- For Zone One along Casey Avenue, students shall be controlled by teachers to walk along Vista Parade towards Grayson Avenue, then turn left into Grayson Avenue to walk to the north-east corner of Nesbitt Park. These students shall be picked up by their parents / carers at this location.
- For Zone Two on Princeton Avenue, the students shall be controlled by teachers to walk along Vista Parade to the corner of Vista Parade and Princeton Avenue where they shall be met by their parents / carers. Parents are requested to park on the western side of Princeton Avenue to reduce demands for crossing the road in this location.

Parents / carers should not park on Grayson Avenue between Casey Avenue and Bryson Avenue.

A plan for the location of Zone One and Two is provided below.



Plan showing pick up zones